



The Western Grebe

Redbud Audubon Society, Inc.,

www.redbudaudubon.org

Volume 51 • Issue No. 4 • December, 2025

Join Redbud Audubon for its annual bird identification program on Dec. 18

Join us as we kick off Redbud Audubon's Christmas Bird Count (CBC) with a special Zoom program hosted by Donna Mackiewicz on Thursday, Dec. 18 at 7 p.m. This is the 51st year that Redbud has participated in the nationwide Christmas Bird Count.

This fun and informative session will feature photos of many of the bird species we expect to see, along with highlights of special species we *hope* to spot during the 24-hour count taking place on Saturday, Dec. 20.

Everyone is welcome—from brand-new birders to seasoned experts.

To register for the program, click on the link in this newsletter if you receive it by email; or, visit our website at: www.redbudaudubon.org and click on the registration link on the home page. The zoom link will be sent prior to the Thursday night program.



Join us on the Dec. 20 CBC. We could see a Cooper's Hawk!

REDBUD AUDUBON

DECEMBER MEETING

Thursday, December 18, 7 pm

Topic: Bird identification for upcoming CBC

Speaker: Donna Mackiewicz

To register for this Zoom meeting, click link:

[Redbud Audubon Program Registration](http://www.redbudaudubon.org)

Or visit RedbudAudubon.org and click on the registration link

Or scan the following QR code:





American Robins have been spotted in the County.



Kingfishers are prevalent on the Clear Lake.



Green Herons could be spotted along the shoreline.



Northern Flickers are a common sighting.

Christmas Bird Count (CBC) is set for December 20, 2025

Redbud Audubon Society will carry out its annual Christmas Bird Count (CBC) on Saturday, Dec. 20. The CBC is a traditional project of Audubon societies around the country. Former participants have been sent information about meeting times and places by the count organizers, Brad and Kathy Barnwell; the public is also welcome to participate and can do so by emailing Redbud Audubon at redbud.audubon@gmail.com for more information.

We are trying something different this year and will meet on Sunday, Dec. 21 for the after-count get together where everyone reports their sightings and we enjoy pizza, hosted by Redbud Audubon, as we go over the results. The plan is to meet at noon at Kelseyville Pizza, where we used to meet before Covid.

Before the bird count, on Thursday, Dec. 18, starting at 7 p.m. Donna Mackiewicz will host a Zoom Bird Identification program. This will be an extensive slide show featuring birds that are often seen on the annual count and birds that are common to Lake County. The program emphasizes the field characteristics of the common and some not-so-common birds here. The Zoom registration is in this Western Grebe newsletter.

National Audubon has been holding a Christmas Bird Count for 124 years and this is Redbud's 51st count. The official count period usually starts around the middle of December and ends the first week of January. Local Audubon Societies can decide what day they conduct their counts within this time frame. Every individual bird and species encountered during the day is recorded. Each count group has a designated circle of 15 miles in diameter and tries to cover as much ground as possible within a certain period of time.

Newcomers are encouraged to join in on the bird count. You don't have to be an expert birder to participate. Besides emailing Redbud Audubon, feel free to call Brad or Kathy at (707) 263-1283 for more information.

President's Message

by Donna
Mackiewicz

Please consider supporting Redbud Audubon!



Donna Mackiewicz

Dear Friends of Redbud Audubon,

As the year ends, we hope you'll consider supporting the important work the Redbud Audubon Society does throughout the year through our annual appeal. You can find the appeal letter on the Donate Now page of the chapter website, and one has also been mailed, or you may receive it by email.

We not only need financial support, but we also need active board members and volunteers.

If you value our programs and their impact on local conservation and education, please consider stepping up as a volunteer. We have many opportunities for people to get involved, with something for everyone:

- Leading or assisting with our popular field trips
- Helping with vital environmental programs and advocacy efforts
- Assisting with the newsletter mailing process
- Updating our web pages to keep the community informed
- Managing fishing line collection stations to protect wildlife
- Monitoring our bluebird nest boxes to ensure breeding success

Your time and dedication can make a real difference. Please visit our official website at www.redbudaudubon.org or contact me directly at (707) 805-9410 to learn more about our work and how you can contribute to our mission.

Sincerely, Donna

Please provide us with your email

A number of our members have emailed us at redbud.audubon@gmail.com to opt in to receive our newsletter, "The Western Grebe" by email as opposed to receiving it by mail.

Not only do you help save a tree, you help us save on expenses and energy in sending it to you by regular mail, and it comes to you in color versus the black-and-white mailed version. If you have been meaning to, but haven't yet done so, take a minute or two out of your time to do so.

Even if you still prefer to receive the mailed version of the "Grebe", we would like to have your email for our records. Once in a while, we send out emails to our members about important events or bird sightings that may be of interest. You are also welcome to email us with any information that you think would be of interest to the membership. Questions requiring expert opinions are forwarded to the appropriate persons.

Also, we rely on our members for whom we have emails to help us with any volunteer efforts that we may have. Often it just means a couple of hours of your time. Whether you have areas of expertise or birding skills that you can share, or are willing to help us with general staffing of booths, setting up booths and transporting materials, we welcome your participation.

So please give us your email address by sending it to redbud.audubon@gmail.com, and, if you wish, let us know in what areas you feel you can help.

New participants urged to join upcoming CBC

The Redbud Audubon Society is encouraging new people to participate in the annual Christmas Bird Count (CBC) this year on Saturday, Dec. 20, 2025.

Anyone interested in joining us is invited to join either the Clear Lake State Park group or the Anderson Marsh State Historic Park group. All participants joining one of these groups are asked to reserve their spots; which can be done by calling Kathy or Brad Barnwell at (707) 263-1283, leave a message with your contact information, or email them at bradleybarnwell@att.net. "Please let us know if you have any friends or family who would like to join us," Kathy Barnwell urged.

Participants will be asked to send in their report forms by mail to Kathy and Brad Barnwell or attend the annual "Count Gathering". This year, the after-count get-together will be on Sunday, Dec. 21, at noon at Kelseyville Pizza. It is a fun event where participants in the count gather, enjoy pizza and refreshments, and go over the team results of the count day. The event is hosted by Redbud Audubon and all participants are welcome to attend. The Barnwells will compile the data and send it out for review and approval. You can mail your information to P.O. Box 554, Lakeport CA, 95453 or email bradleybarnwell@att.net.



Pelicans are back on the lake.

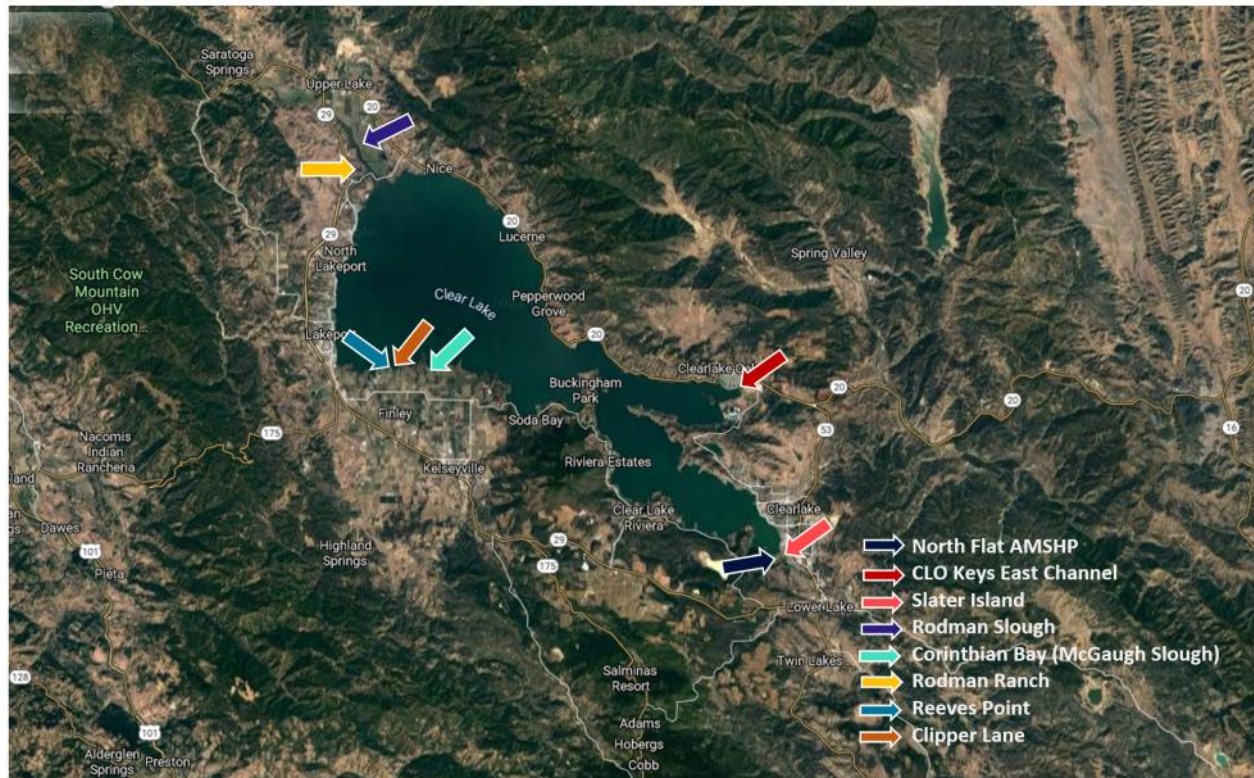


White-breasted Nuthatches can often be seen creeping headfirst down branches looking for insects.



The wren, a shy California songbird with a distinctive bouncing call, clings to chaparral thickets where it spends most of its life hidden among dense brush.

Great Blue Heron Rookery Sites
Lake County, CA



Annual update on the state of the Heron rookeries around Clear Lake

For several years now, members of Redbud Audubon have been tracking the existence and activities at many Great Blue Heron rookery sites around Clear Lake. These nesting areas have changed over the years and it has been a concern that activity could be declining. It is often hard to discern, because in some areas, like Slater Island in Anderson Marsh, the herons (and probably egrets) have started nesting more inland on the island and so the nests cannot be viewed from the water. However, the chattering of young, and flying in and out of the Great Blues have been noted. *See heron charts on pages 6-7*

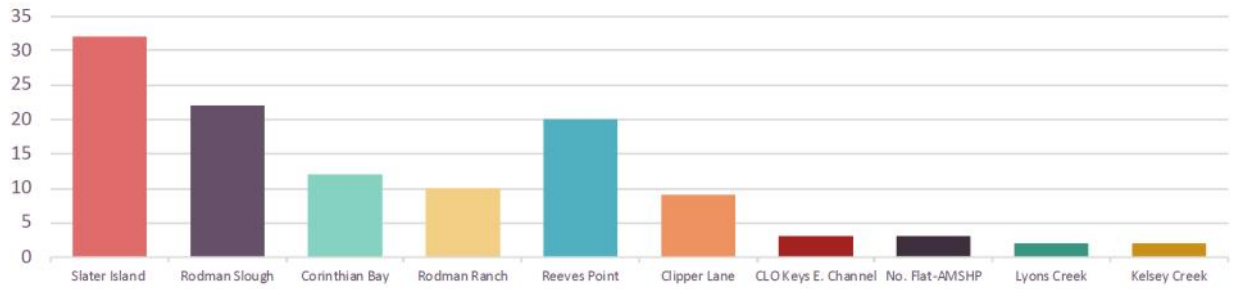
Location	Years Active	Under 30 Nests	Over 30 Nests	Year Decrease Noted	No Nests Noted	Number of Active years
Slater Island	1990-2019; 2024-2025		x	2018	Active*	32
Rodman Slough	2000 - 2021		x		2022	22
Corinthian Bay	2006 - 2017		x		2018	12
Rodman Ranch	1990 - 1999		x		2000	10
Reeves Point	2006-2025	x			Still active	20
Clipper Lane	2017-2025	x			Still active	9
CLO Keys E. Channel	2023-2025	x			Still active	3
No. Flat-AMSHP	2023-2025	x			Still active	3
Lyons Creek	2024-2025	x			New	2
Kelsey Creek	2024-2025	x			New	2



Great Blue Heron carrying sticks to build its nest high in the colony trees.

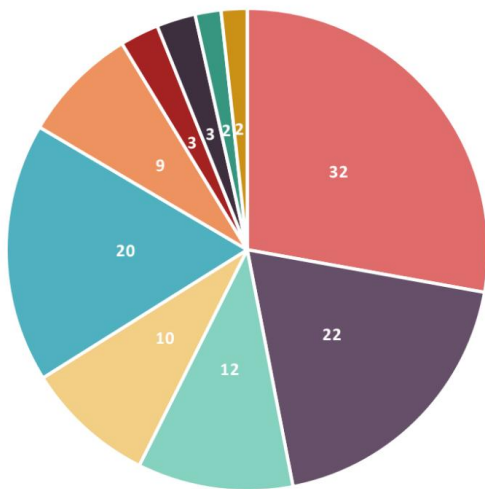
Great Blue Heron Rookeries

Lake County, California Sites & Years Active



*Although we could not count the nests, GBHs have repopulated Slater Island in 2024

Active Years for
Great Blue Heron Rookeries



- Clipper Lane
- CLO Keys E. Channel
- No. Flat-AMSHP
- Lyons Creek
- Kelsey Creek
- Slater Island
- Rodman Slough
- Corinthian Bay
- Rodman Ranch
- Reeves Point





Our walk at Boggs Lake was a pleasant morning, enjoyed by Donna Mackiewicz, Ed Oswalt, Kathy Gaynor and Kathryn McKaig.

Boggs Lake visit was an enjoyable morning

The Nov. 22 visit to Boggs Lake on Mt. Hannah was an enjoyable morning with just five participants. Several Acorn woodpeckers were seen and heard, along with Oak Titmice, Spotted Towhees, and a Red-tailed Hawk.

Boggs Lake is one of the largest vernal pools in the state of California and is co-managed by the Lake County Land Trust and the Nature Conservancy.

The annual Christmas Bird Count in December takes the place of the usual monthly walk, but put Jan. 17, 2026 on your calendar for a visit to the Colusa and Sacramento National Wildlife Refuges.

Legislative support needed to help protect wildlife

Some of our members who are also members of National Audubon may receive emails from National on legislative issues that affect our birds. National Audubon (as well as California Audubon) makes it easy to click on a link to locate your representatives in Congress and their email. Your voice is important! Our voices together can make a difference. Redbud Audubon forwards pertinent legislative notices via email to you. We hope you will not mind if you receive them both from National Audubon and us. The protection of our bird life is extremely important.

2025-2026

Field Trip Calendar

***Please Note: field trips will
start at 9 a.m. unless otherwise
announced in the newsletter***

December 20– Christmas Bird Count

January 17 – Sacramento and Colusa National Wildlife Refuges

February 21 – Lake County Land Trust's Rodman Preserve

March 21 – Clearlake Oaks Boat Ramp/Clark's Island/Wetlands/Rookery

April – TBA

May – Annual Picnic

Details for each field trip will be published in the preceding newsletter, including directions and start time if different from 9 a.m. Field trips are weather dependent and will be cancelled if there is severe weather or weather issues make accessibility difficult. Put these dates on your calendar and plan for a fun day of birding with friends!

REDBUD AUDUBON BOARD OF DIRECTORS



OFFICERS

President: Donna Mackiewicz

Vice President: Roberta Lyons

Treasurer: Nicola Selph

Secretary: Cindy Jasser

Members-at-large:

Katherine Lindsley and Marilyn Waits

CHAPTER LEADERSHIP

Bird Observations - Jerry White

Christmas Bird Count - Brad & Kathy Barnwell

Conservation - Roberta Lyons & Donna Mackiewicz

Field Trips - Donna Mackiewicz & Roberta Lyons

Historian - Pat Harmon

Membership Manager - Susanne Scholz

Newsletter Editor - Roberta Lyons

Graphic Design - Robin Winniford

Newsletter Email Distribution - Donna Mackiewicz

Newsletter Mail Distribution - Jim Scholz

Programs - Cindy Jasser

Publicity - Roberta Lyons

Webmaster - Bonnie Thompson

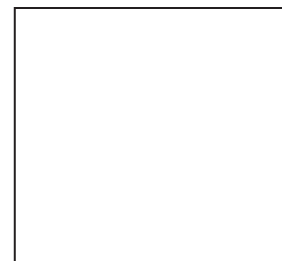
Social Media - Donna Mackiewicz

To contact a board member:

Phone 707/805-9410

Email: redbud.audubon@gmail.com

Redbud Audubon
PO Box 5780
Clearlake, CA 95422



National Audubon/Redbud Audubon
Joint Membership Application
New Member Introductory Rate — \$20 for the first year

☐ **YES** Enroll me in both the National Audubon Society and local chapter Redbud Audubon. Start my subscription to **Audubon Magazine**, and **The Western Grebe** chapter newsletter.

☐ Check this box only if you wish to receive **The Western Grebe** newsletter by regular mail. Otherwise, it will be emailed to you.

☐ From time to time, National Audubon may share its mailing list with other environmental organizations. If you do not wish to be contacted, please check this box.

You have the option of joining just the Redbud Chapter by enrolling online at www.redbudaudubon.org.
Newsletter by email \$25/year; by regular mail \$35/year.

Name _____

Mailing Address _____

City _____ State _____ Zip _____

Phone _____

Email _____

☐ I would also like to make a donation to the local work of Redbud Audubon. My check is enclosed for
_____ \$25 _____ \$50 _____ \$75 _____ \$100 Other: _____

Please make check payable to Redbud Audubon Society. Mail your application and check to POB 5780, Clearlake, CA 95422

Thank you for supporting Redbud Audubon Society
Connecting People with Nature since 1974